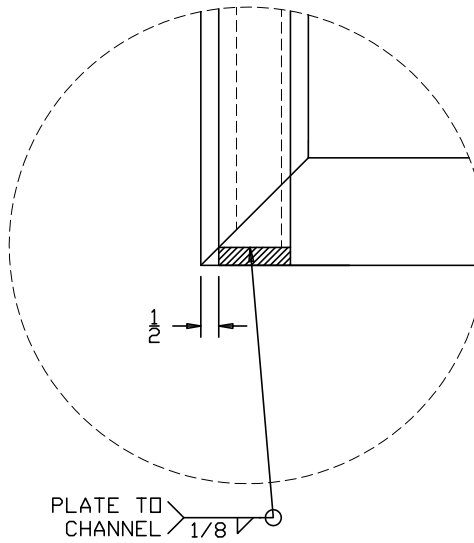
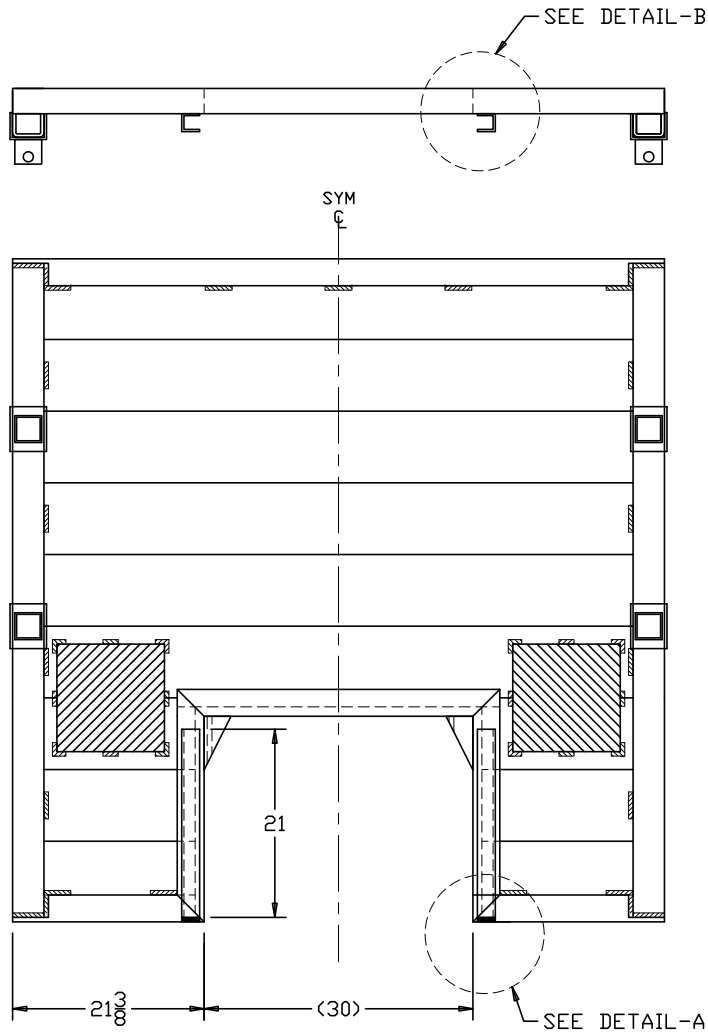
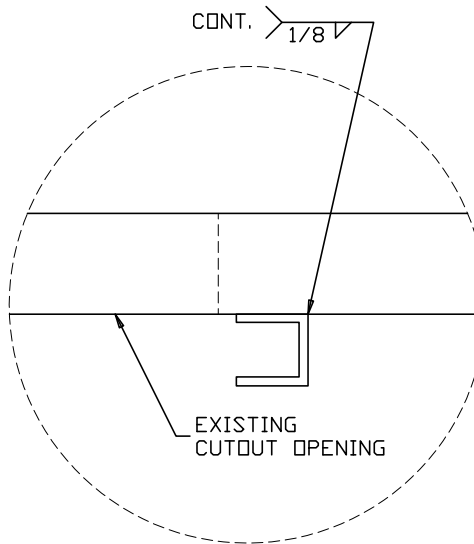


STEP ONE



DETAIL - A
NO SCALE



DETAIL - B
NO SCALE

2AEX SHIELD MODIFICATION SPECIFICATION:
This specification applies to the GME Lite Shield System.

SPECIFICATIONS:

- All welding shall be performed according to the Aluminum Association's Specifications For Aluminum Structures.
- A certified welder shall perform all welding.
- 3/64 Diameter 5356 welding wire shall be used to complete the welds.
- The the End Bracket replacement part shall be manufactured by GME.
- Channel C2 X 2 X 1/4 6061-T6 Aluminum.

PROCEDURE:

- STEP 1. Grind existing weld off using grinding disc made for aluminum materials.
- STEP 2. Weld channel to shield as shown.
- STEP 3. Weld stop to channel as shown.

THIS PRINT ISSUED BY GRISWOLD MACHINE AND ENGINEERING, INC. UPON REPRESENTATION THAT IT WILL BE RETAINED IN CONFIDENCE NEITHER TO BE DUPLICATED NOR EXHIBITED EXCEPT TO FACILITATE USE OR MANUFACTURE OF GRISWOLD PRODUCTS.

GME GRISWOLD
MACHINE AND ENGINEERING, INC.
UNION CITY, MICHIGAN 49094

SCALE: AS SHOWN
DWN: BPS

**2004 2AEX DOOR
FRAME ASSEMBLY**

DATE: 07/20/04	DRAWING NO. REPAIR 008	REV. NO. 0	PAGE 1 OF 1
----------------	------------------------	------------	-------------